

What's Accepted

Electronics accepted at our drop-off locations



Display Devices

Televisions and monitors, including various technologies such as Cathode Ray Tube (CRT), All-in-one, flat panel (LCD, LED and plasma) and rear projection.



Non-Cellular Telephones

Includes corded and cordless telephones, as well as telephone answering machines.



Home Audio/Video Systems

Includes VCR, DVD and CD players, digital cable and satellite equipment, speakers, amplifiers, receivers, data projectors and similar audio/video systems.



Desktop Computers

Desktop computers (including those acting as servers) and all bundled keyboards, mice, cables and internal components.



Portable Computers

Includes portable computers such as laptops, netbooks, notebooks and tablets.



Computer Peripherals

Includes both wired and wireless manual input devices such as keyboards, mice and trackballs.



Desktop Printers/Multi-Function Devices

Printers designed to reside on a work surface, including laser and LED, ink jet, dot matrix, thermal, dye sublimation and "multi-function" copy, scan, fax and print devices. Stand-alone desktop scanners and fax machines are also included in this category.



Personal/Portable Audio/Video Systems

Includes docking speakers, portable stereos, portable CD players, portable audio recorders, tape/radio players, headphones, digital media (MP3) players, voice recorders, digital cameras and video cameras.



Vehicle Audio/Video Systems (aftermarket)

Includes amplifiers, equalizers, speakers and audio/video components.



IT and Telecom Equipment

Includes routers, bridges, ethernet switches, networking products (including security appliances and firewalls), and business video conferencing systems.



Musical Instruments

Includes electric guitars, electronic drums, electronic keyboards, digital pianos, foot pedals for electronic keyboards, DJ mixers and electronic audio devices.



Medical and Monitoring Equipment

Includes digital thermometers, hearing aids, electronic blood pressure devices and microscopes. A product is excluded if it has been implanted in a person, if it requires decontamination prior to recycling, or if it has come into contact with blood or other biological contaminants prior to end-of-life.



Video Gaming Systems and Accessories

Includes gaming consoles, video game console controllers and both wired and wireless joysticks.



Small/Large Battery-Powered Ride-On-Toys/Micro Toys/E-Toys

Includes 12 volt battery powered ride-on toys, electric ride-on toy cars or trucks, electric toy scooters, electronic toy promotional items (i.e. sold with meals), electronic key chains, action figures or dolls and electronic toy vehicles.



Cellular Devices and Pagers

Cellular phones, including those offering camera, video recording and/or audio functions, smartphones (cell-enabled), cell-enabled PDAs utilizing touch-screen technology and cell-enabled handheld devices.



Floor-Standing Photocopiers/Multi-Function Devices

Floor-standing photocopiers and Multi-Function Devices (MFDs). This will include all printing and copying devices, utilizing all printing technologies, that are floor-standing models with a maximum weight of 200 kg.

When you bring your electronics to EPRA/Recycle My Electronics authorized locations, you're helping to:

- Ensure the safe and secure destruction of personal data stored on hardware.
- Protect the health and safety of workers and handlers.
- Divert e-waste from Canadian landfills.
- Prevent e-waste from being illegally exported or handled by irresponsible recyclers, decreasing environmental issues for the planet.
- Recover and recycle resources that can be repurposed in the manufacturing supply chain, conserving natural resources.



To find out what and where to recycle, visit return-it.ca/electronics

For more information, visit: recycleMYelectronics.ca/BC

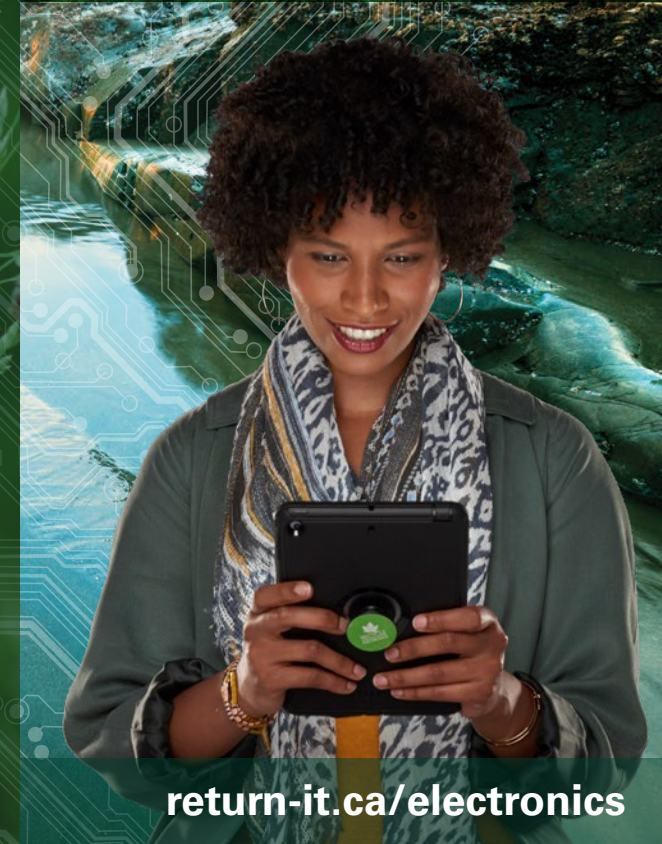
or Call Toll-Free **1-888-252-2712**

or email infoBC@recycleMYelectronics.ca



The RECYCLE MY ELECTRONICS & Design trade-mark is the sole property of Electronic Products Recycling Association. Any unauthorized use is strictly prohibited.
Published February 1, 2022

The future is in your hands.
Don't let it go to waste.™



BRITISH COLUMBIA

What We Do

Q&A

Safely and securely recycling electronics through the Recycle My Electronics program ensures that the resources inside are recovered and put back into the manufacturing supply chain.

About Electronic Products Recycling Association

As a recognized industry-led not-for-profit organization, Electronic Products Recycling Association (EPRA) provides environmental compliance programs for manufacturers, distributors and retailers of electronics. EPRA is responsible for implementing and operating, on behalf of their stewards, a safe and secure program for the recovery and reclamation of end-of-life electronic products.

Who are we?

Recycle My Electronics is your go-to resource for electronics recycling. We're here to help you recycle your end-of-life electronic products and provide educational resources.

To find out what and where to recycle, visit return-it.ca/electronics

For more information, visit: recycleMYelectronics.ca/BC

Q: What is Electronic Products Recycling Association (EPRA) British Columbia?

A: EPRA British Columbia is a not-for-profit industry-led organization that operates a government-approved end-of-life electronics recycling program throughout the province. Residents and businesses can drop off their unwanted electronics free of charge for safe, secure and responsible recycling at an EPRA British Columbia drop-off location.

Q: Isn't it important to reuse before recycling?

A: Absolutely. The EPRA British Columbia program is designed to manage end-of-life electronic products that have exhausted their reuse potential. If your electronic items are not at the end of their useful life, you are encouraged to explore reuse opportunities including donating them to family members, friends or authorized Reuse Organizations.

Q: How does EPRA British Columbia ensure that electronics are recycled responsibly?

A: EPRA is committed to recycling end-of-life electronic products collected through our network of drop-off locations in a responsible manner. EPRA only works with recyclers who have been verified under the national Electronics Recycling Standard (ERS) which was designed by the electronics industry to ensure that end-of-life electronics are managed in a safe and environmentally-sound manner. This means that all EPRA verified recyclers must be actively processing material that is entrusted to them by EPRA. Further, our Recycler Qualification Office (RQO) verifies the recyclers against the ERS requirements. This ensures that recyclers are maintaining appropriate environmental, health and safety controls and are properly handling all materials. For more information, visit www.RQP.ca

Q: How do I know my personal information will not be seen or stolen?

A: Consumers and businesses are responsible for ensuring that all personal data is removed from their electronic devices, prior to bringing them to one of our drop-off locations. If you are unsure how to do this, contact the manufacturer for more information. While EPRA British Columbia requires that all of our recyclers protect data on end-of-life electronics from unauthorized access or theft, it is your obligation to protect your personal information. EPRA British Columbia does not accept liability for data or any other digital content that is left on electronic products collected at our drop-off locations.

Q: How is the program funded?

A: EPRA British Columbia is funded through Environmental Handling Fees (EHF) that are applied on the sale of all new electronic products. It's not a tax, nor is it a refundable deposit. The EHF is based on the cost to recycle end-of-life electronic products. All program revenue is used for the collection, transportation and responsible recycling of end-of-life electronics as well as program administration.

Q: Where will my recycled electronics go?

A: EPRA British Columbia manages end-of-life electronics according to the highest environmental standards at every stage of the recycling process. Once collected and sorted, items are sent to an EPRA approved recycling facility for dismantling, and proper downstream management. All other materials are separated into different streams to recover metals, plastics, glass and natural resources so they can be processed into new products.

For more information, visit recycleMYelectronics.ca/BC