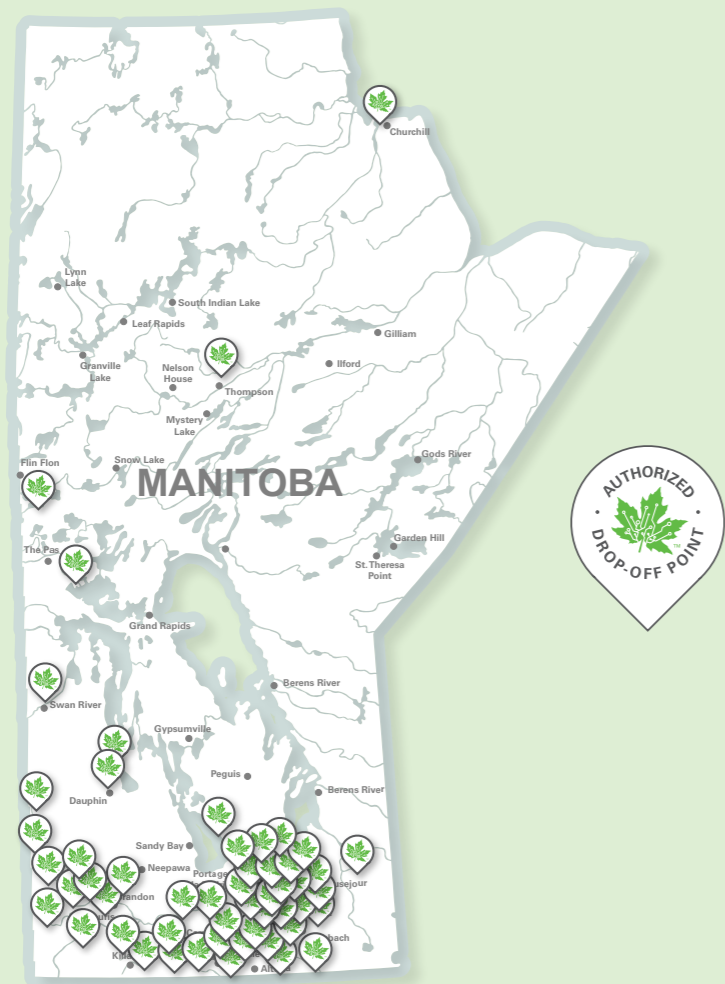


EPRA Manitoba

2025 Annual Program Summary



COLLECTION

Operational Indicators

Measures related to the weight of regulated electronics collected by the program for recycling.



End-of-Life Electronics Collected.

2,553
tonnes



Tonnes collected.

1.9
kg/capita



Kilograms collected per capita.

ACCESS

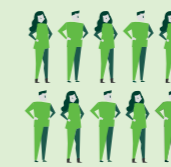
Collection Accessibility and Convenience Indicators

Measures related to the convenience of accessing the program to have regulated electronics recycled.



Collection Site Coverage and Convenience.

97%



% of Manitobans within a 15 minute drive time (urban) or 48 minutes or 50km distance (rural) of an EPRA MB Drop-off Centre.

114



Total collection sites.

AWARENESS

Public Awareness and Industry Participation Indicators

Measures related to the public's awareness of the program and the participation of obligated industry stewards in the program for environmental regulatory compliance.



Public Awareness and Industry Participation.

83%



Percentage of the population aware of the e-recycling program.

608



Total manufacturers, retailers and other industry stewards registered with EPRA Manitoba.

COST

Financial Indicators

Measures related to the cost of delivering the program, including collection, consolidation, transportation, audits, processing, administration, communications, management and professional fees.



Program Costs.

\$1,429
per tonne



Total program cost per tonne.

This scorecard lists the harmonized Key Performance Indicators (KPI) which EPRA's regulated, industry-led electronics stewardship programs operating in 2025 in Canada have committed to report on, as per "Research and Recommendations for Performance Measures For Regulated, Industry-Led, End-of-Life Electronics Recycling Programs in Canada" (Intergroup Consultants Ltd, April 2010). These measures reflect data which is presented in each program's annual report and/or other public reporting.

Schedule of Operations Manitoba

Year ended December 31, 2025, with comparative information for 2024

	2025	2024
Revenue:		
Program fees	\$2,187,808	\$2,378,236
Interest income and other revenue	218,032	396,487
	2,405,841	2,774,723
Expenses:		
Direct operations:		
Processing	1,176,898	1,233,802
Collection	507,183	520,866
Transportation, warehousing and storage	619,496	403,904
	2,303,577	2,158,572
Other:		
Consumer awareness and communications	676,641	654,680
Administration	667,169	632,713
	1,343,810	1,287,393
	3,647,387	3,445,965
Deficiency of revenue over expenses	(\$1,241,546)	(\$671,242)

Governance

EPRA Board of Directors

EPRA Board of Directors as of December 31, 2025:

Maja Czubernat

Chris Gouglas

Cheryl Quigley

Carleen Hall-Barnes

Giro Rizzuti

Steve McEwen

Nick Curalli

Marie-Anne Champoux-Guimond

Eduardo Molina

Each provincial EPRA program has an Executive or Program Director responsible for the local management of the programs:

Cliff Hacking, President and Chief Executive Officer

Nick Lorusso, Chief Financial Officer

Craig Wisehart, Executive Director, Western Canada

Gayleen Creelman, Program Director, Saskatchewan

Dennis Neufeld, Program Director, Manitoba

Dominique Levesque, Executive Director, Québec

Karen Ulmanis, Program Director, New Brunswick

Maylia Parker, Executive Director, Atlantic Canada

Michelle Marley, Program Director, Newfoundland and Labrador