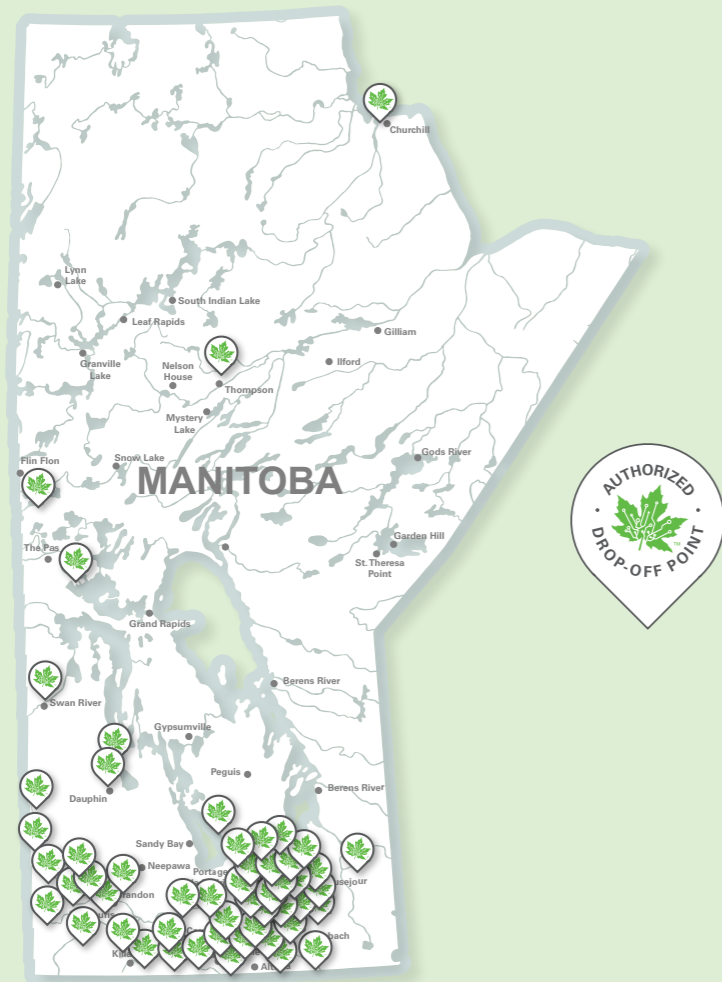


EPRA Manitoba

2022 Annual Program Summary



COLLECTION

Operational Indicators

Measures related to the weight of regulated electronics collected by the program for recycling.



End-of-Life Electronics Collected.

2,328
tonnes



Tonnes collected.

1.7
kg/capita



Kilograms collected per capita.

ACCESS

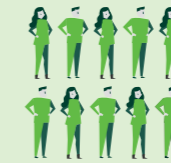
Collection Accessibility and Convenience Indicators

Measures related to the convenience of accessing the program to have regulated electronics recycled.



Collection Site Coverage and Convenience.

97%



% of Manitobans within 50 kms (rural) or 30 minutes (urban) of an EPRA MB Drop-off Centre.

103



Total collection sites.

AWARENESS

Public Awareness and Industry Participation Indicators

Measures related to the public's awareness of the program and the participation of obligated industry stewards in the program for environmental regulatory compliance.



Public Awareness and Industry Participation.

83%



Percentage of the population aware of the e-recycling program.

594



Total manufacturers, retailers and other industry stewards registered with EPRA Manitoba.

COST

Financial Indicators

Measures related to the cost of delivering the program, including collection, consolidation, transportation, audits, processing, administration, communications, management and professional fees.



Program Costs.

\$1,315
per tonne



Total program cost per tonne.

This scorecard lists the harmonized Key Performance Indicators (KPI) which EPRA's regulated, industry-led electronics stewardship programs operating in 2022 in Canada have committed to report on, as per "Research and Recommendations for Performance Measures For Regulated, Industry-Led, End-of-Life Electronics Recycling Programs in Canada" (Intergroup Consultants Ltd, April 2010). These measures reflect data which is presented in each program's annual report and/or other public reporting.

Schedule of Operations Manitoba

Year ended December 31, 2022, with comparative information for 2021	2022	2021
Revenue:		
Program fees	\$2,259,118	\$3,090,507
Interest	207,875	60,964
	2,466,993	3,151,471
Expenses:		
Direct operations:		
Processing	1,091,651	1,266,250
Collection	451,193	535,513
Transportation, warehousing and storage	329,070	308,242
	1,871,914	2,110,005
Other:		
Consumer awareness and communications	530,083	519,650
Administration	659,707	509,736
	1,189,790	1,029,386
	3,061,704	3,139,391
Excess (deficiency) of revenue over expenses	(\$594,711)	\$12,080

Governance

EPRA Board of Directors

EPRA Board of Directors as of December 31, 2022:

Jeff Van Damme Samsung Electronics Canada Inc.	Kristyn Rankin Apple Canada Inc.
Chris Gouglas Best Buy Canada Ltd.	Giro Rizzuti Costco Wholesale Canada
Cheryl Quigley Sony Canada	Steve McEwen Staples Canada Inc.
	Nick Curalli London Drugs Limited

Each provincial EPRA program has an Executive or Program Director responsible for the local management of the programs:

Cliff Hacking, President and Chief Executive Officer
Annie Holmes, Vice President and Chief Financial Officer
Craig Wisehart, Executive Director, Western Canada
Gayleen Creelman, Program Director, Saskatchewan
Dennis Neufeld, Program Director, Manitoba
Dominique Levesque, Executive Director, Québec

Gerard MacLellan, Executive Director, Atlantic Canada
Michelle Marley, Program Director, Newfoundland and Labrador
Karen Ulmanis, Program Director, New Brunswick